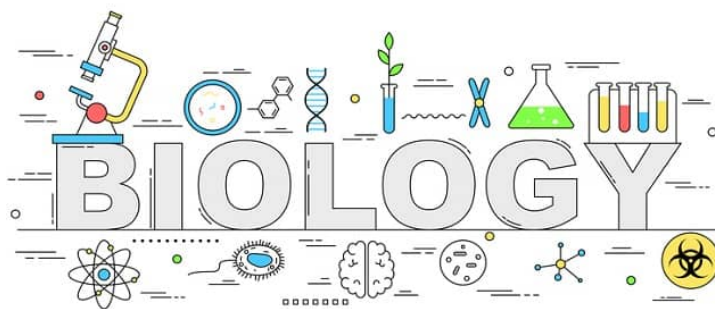


Honors Biology  
Mrs. Holmgren and Mrs. McClure  
Room 44

#### My Schedule

- 1st - Honors Biology
- 2nd - AP Biology
- 3rd - Prep
- 4th - Honors Biology
- 5th - A lunch and Honors Biology
- 6th - AP Biology
- 7th - Prep
- Potter Hour Room \_\_\_\_\_
- I am typically at school until 4:15 p.m.



Honors biology is a comprehensive study of the living world, this course is designed for the science-oriented student. Embedded within the course work is an emphasis on the processes of science including; making observations, proposing hypotheses, problem-solving, experimental design, and data analysis. A unit on laboratory investigations, experiments, microscope work, and the dissection of a fetal pig are course requirements. It is hoped that this course will be a stepping stone toward other science courses offered at Morton High School.

FORMAT: Material will be presented for study in a variety of ways. Laboratory investigations will be the standard method of learning in the classroom. In addition, there will be homework to reinforce key concepts and to introduce some objectives. Lecture time is held to a minimum to allow students to experience science as a process. Generally, lecture-discussion sessions are held at the beginning of each unit in order to introduce the topic and give direction, and again at the end of the unit to emphasize the important ideas and skills learned in the lesson.

EXPECTATIONS: Since honors biology and standard biology are both introductory survey courses, they both cover essentially the same material. However, honors biology requires more higher-level thinking and more advanced laboratory skills. For example, during microscope work, the students are taught how to measure specimens with the microscope and are then expected to use this skill throughout the course. Students are also taught how to design and conduct experiments. Throughout the year students will be required to demonstrate an ability to design and conduct their own experiments. In addition, students are asked to apply their knowledge to more advanced problems on quizzes and tests.

Our curriculum is aligned to the NGSS standards. These standards are used in junior high and elementary schools.

## Classroom Rules

1. Follow directions the first time they are given.
2. Be prepared for class every day.
  - a. Charged iPad
  - b. Writing utensil
  - c. Homework / Notes
  - d. Folder for this class
3. Be in the class when the bell rings. Tardies will be tracked according to policy.
4. Do not line up at the door before the bell rings. Remain in a seat.
5. Respect yourself and others. This includes not talking while others are speaking.
6. No food/drink of any kind in the lab area—including gum, candy, soda

I expect students to be in class on time. When a student is absent, it is their responsibility to find out the missed assignments via Schoology or peers. Make-up days are handled per the handbook. Homework is due at the beginning of the hour unless otherwise noted. Late work will be accepted on the due date until 3:40 p.m. for half credit. Assignments are not accepted the next day.

## What students need to be successful in Mrs. Holmgren's classes:

Folder/binder dedicated to this class Writing tool

Calculator

Charged iPad

**Good attendance and participation!**

Completed homework

**Grades:** Grades are calculated by total points. All tests are 100 points.

Students can expect a test at the end of each unit. **First-quarter** students will start to grow plants in the greenhouse as a part of an ongoing student-designed project. In November (**second quarter**), students will wrap up this project and display their research in a type of "science fair" format. In the **third quarter**, students will continue with scientific experiments of their design. You can expect to see some alternative assessments. Finally, in the **fourth quarter**, students dissect the fetal pig in the last month of school.

## Remote Learning

In the event that remote learning occurs, you are expected to maintain classwork and attend synchronous sessions. Expectations and a strong work ethic are still expected. We will use Schoology and Google Meet to create a seamless educational experience.

## Late work

Late work is only accepted on the day due for half credit. Assignments are due on the due date and time. Anything after the date and time is deemed late. Please submit all work on time. No late work is accepted the next day.